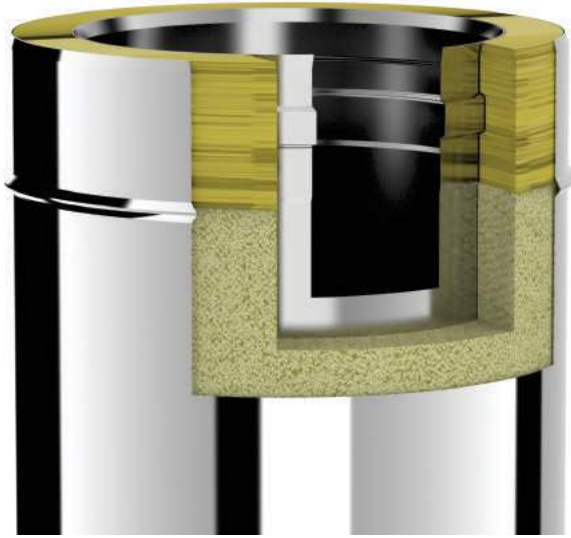




PRODUCT CATALOGUE



 **Solinox**[®]
Chimney Systems



MAIN FEATURES - UK/Ireland

- Easy and quick assembly.
- Suitable for internal & external applications.
- High density rock-wool insulation.

- **Overlap** : 50 mm.
- **Welding type** : (TIG- Continuous).
- **Thickness** : 0.5 mm.
- **Joining type** : male/female sockets
- **Diameter** : 130mm/150mm.
- **Color** : stainless steel/black.

CERTIFICATES

S1 TWIN WALL INSULATED PIPE

- ① S2 - Length
- ② S1 - Start off Adaptor
- ③ S1 - Length
- ④ S1 - Roof Support
- ⑤ S1 - Structural Locking band
- ⑥ S1 - Rain Cap
- ⑦ S1 - Storm Collar

S2 VITREOUS ENAMEL PIPE

- ⑧ S1 - Flashing
- ⑨ Mesh guard in attic
- ⑩ Air Vents
- ⑪ S1 - Fire Stop Plate
- ⑫ S3 - Pot Hanger Rain Cap
- ⑬ S3 - Flue Liner
- ⑭ S1 - Wall Bracket

S1 FLEXIBLE FLUE LINER

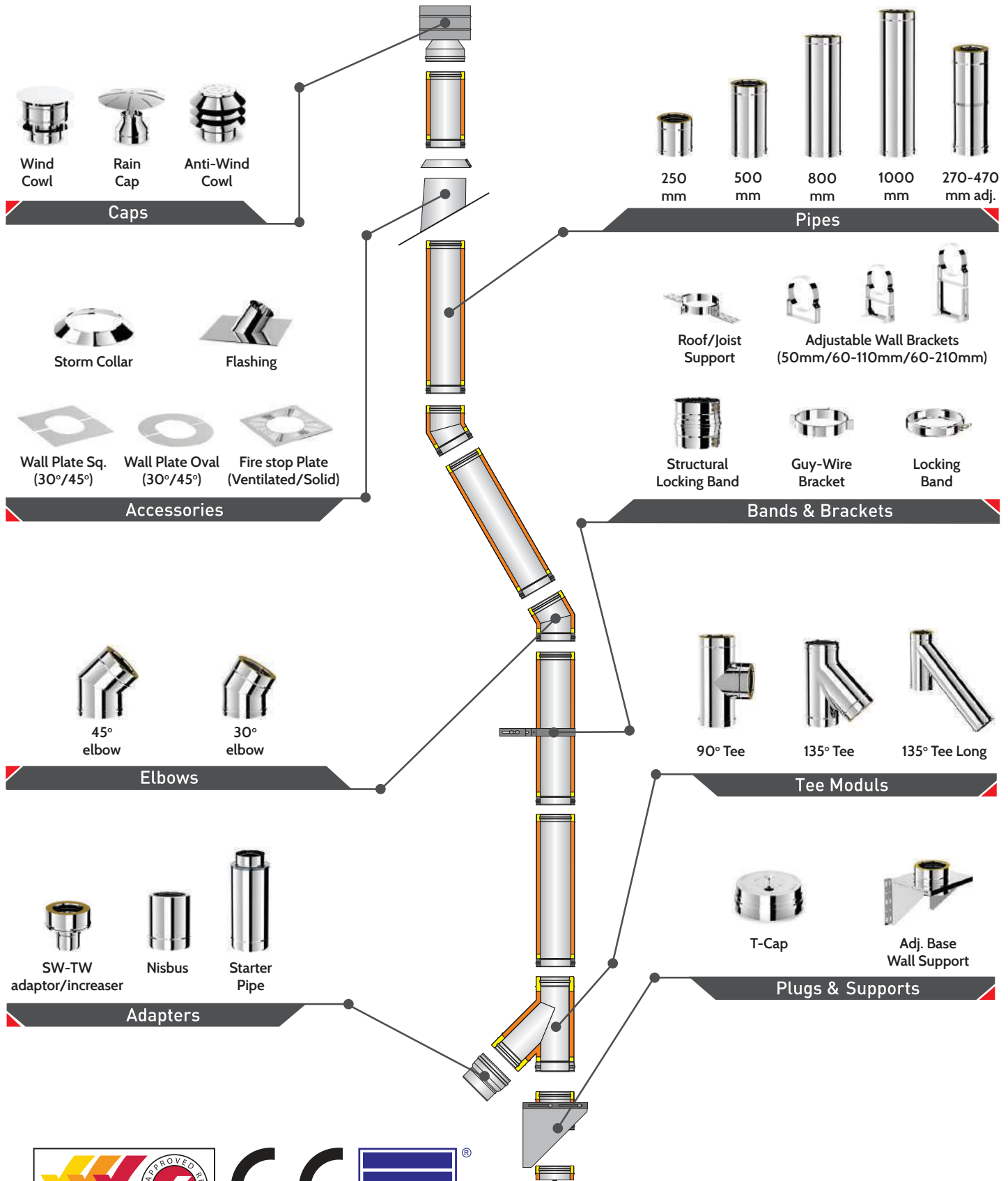
- ⑮ S1 - 45° Bend
- ⑯ S1 - Length
- ⑰ S1 - 135 Tee Extended
- ⑱ S1 - Start off Adaptor
- ⑲ S2 - Length
- ⑳ S3 - Vitreous to Flexi Adaptor

SLXBA EN1856-1/2 T600 N1 D V2 L50050 G60
SLXBA EN1856-1/2 T600 N1 WV2 L50050 G60



* See Technical Booklet L (NI), Technical Guidance Document J (ROI), Approved Document J (England & Wales), Building Standards Technical Handbook (Scotland) for full and up-to-date regulations.

MODULES OVERVIEW



1020

Double wall chimney systems



Murat Çankırlı İnşaat Mak. Gıda San. ve Tic. Ltd. Şti.
Fevzi Çakmak Mah. 10646 Sk. No:6-8 Karatay - KONYA - TÜRKİYE
Tel : +90 332 239 18 07-08 Fax : +90 332 239 18 09
www.solinox.com.tr - info@solinox.com.tr